

## Special data recoding system

„Geomega’s in-house developed LandStreamer recording device offers high efficiency in the field of engineering seismic surveys.”

„Without our wireless recording system, seismic surveys would be almost impossible on this unaccessible land.”

„Thanks to the continuously ongoing innovations, Geomega is equipped with the most practical software and state-of-art recording instrumentation.”



## Unique seismic source for P and S wave recording

„Non-destructive, environmental friendly, silent, but extremely effective.”

„Another dimension of resolution, never seen details on shallow seismic sections recorded on land, even on paved roads or concrete surfaces.”

„An electromechanical vibroseis source which can be operated in P-wave and S-wave mode as well. It is suitable for various surface conditions.”

„Very effective survey progress can be achieved when combined with the LandStreamer technology. Two operators surveying up to a kilometer long profile in just one day.”



## Shallow engineering seismic surveys

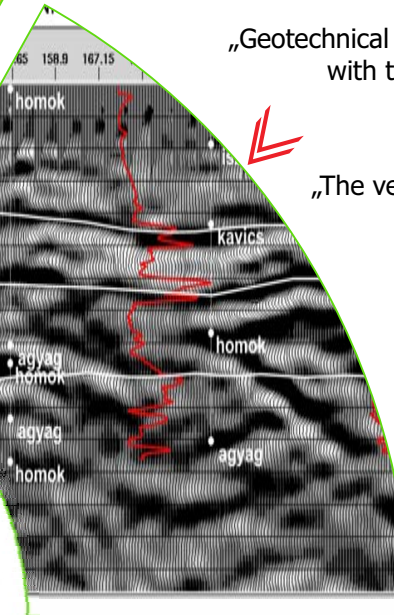
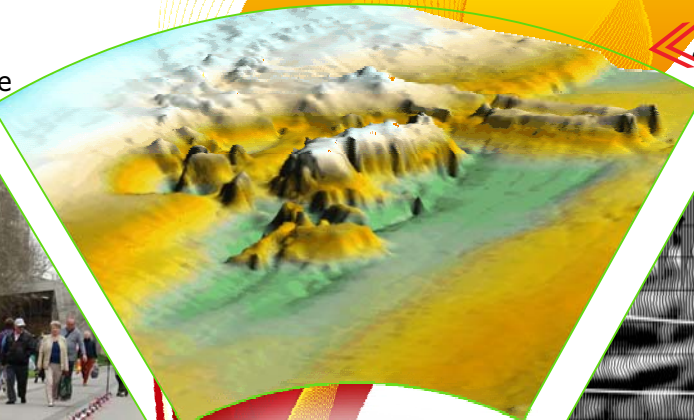
„Remnants of a bridge and outcropping dolomite rock could be delineated in the planned route of metroline M4.”

„Geotechnical CPT data could be correlated with the subsurface layers mapped on the seismic profiles.”

„The velocity and the morphology of the basement rocks determined.”

„Non-destructive surveys of flood control dams.”

„Cavity detection and investigation of landslide areas.”



**GEOMEGA**  
FROM IDEAS TO IMPLEMENTATION

## Seismic surveys of waterways

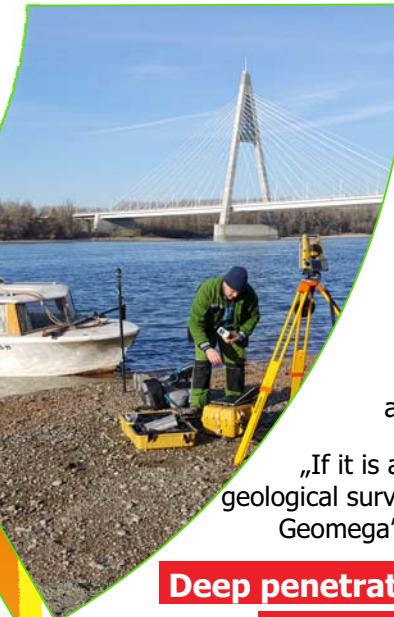
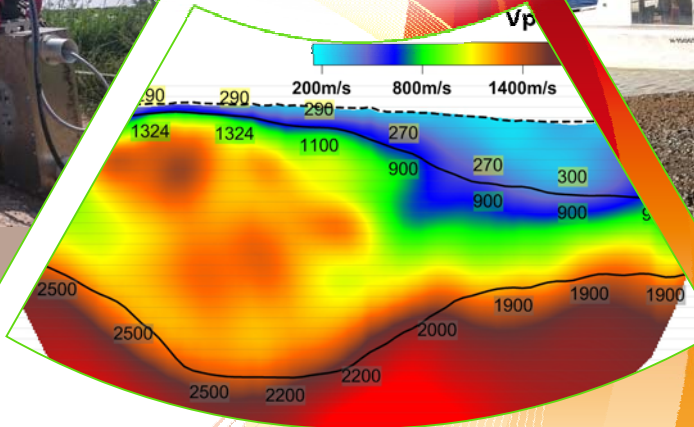
„Precise mapping of the water bottom, the sludge and the gravel layers. The information required for planning of dredging.”

„Geomega is well-known for many years of experience and many successful projects.”

„If it is about underwater archeology, geological surveys or monitoring of pipelines, Geomega’ experts are the best choice.”

## Deep penetration engineering seismic surveys

„Detailed mapping of the bedrock in a backfilled mine. This was a critical parameter for the engineering design.”



### Our services

Our company has an unmatched geophysical instrumentation in Hungary. Geophysical surveys completed by Geomega Ltd. helped to answer several engineering and geological questions:

- surveying of pipeline crossings below rivers
- riverbed and sediment thickness mapping
- mud thickness mapping and monitoring
- detection of buried objects (i.e. hazardous waste)
- flood protection and embankment surveying
- geophysical surveys for archeological mapping
- non-destructive surveying of concrete structures
- geological mapping for special construction sites (i.e. power plants, dams, tunnels)
- geotechnical surveying
- determination of soil mechanical parameters
- cavity-, drain-, pipeline and cable investigations
- surveying road conditions
- delineation of soil contaminations
- geothermal exploration
- drilling of shallow boreholes
- environmental and geological exploration supporting remediation works
- exploration of water reservoirs



### Our philosophy...

... persuade yourself before persuading the Client!

### Who are we?

Geomega Ltd. was founded in 1992 by internationally acknowledged experts having many years of experience. Our main services include the implementation of engineering and shallow geophysical measurements as well as various subsurface geological exploration activities. The largest value of our company is considered to be the intellectual capital of our highly qualified employees as well as our diverse geophysical instrumentation.

### For more than 25 years ...

... we have been present in the Hungarian and international geophysical market. During our hundreds of domestic and foreign projects we have solved many geological problems being key to engineering design. Key projects were investigation of the tunnel track of Metro4 below River Danube in Budapest, geological investigations of Paks Nuclear Power Plant, surveying of shipping routes on major European rivers and investigation of sedimentation of a mine pit in the Dominican Republic.

### Contact us:

Address:  
1093 Budapest, Zsil utca 1. 2nd floor

Phone:  
+36 30 931 0272

E-mail:  
info@geomega.hu

Web:  
www.geomega.hu  
www.facebook.com/GeomegaLtdBudapest

# GEOMEGA

**FROM IDEAS TO  
IMPLEMENTATION**



**Shallow Seismic Surveys  
portfolio**